

11 June 2019

KIA ORA KOUTOU

PRINCIPAL'S NEWS

Greetings all,

Most of you will be aware, Nigel is in the UK at the moment. As a team we are working together to support one another as we cover his responsibilities. Our staff is amazingly supportive, and our thoughts are with Nigel and his family during this challenging time.

We will be working together to cover additional roles and responsibilities. Elizabeth Morris and Joanne Schroeder will be spending some time away from their teaching roles to assist with the overall leadership of the school. Sara Franken will be working extra hours to support consistency in learning programmes in Paua and Tui classes.

Today our Plateau Swim team are competing at H2O Xtream, we wish them well as they enjoy the challenge racing against other Upper Hutt Schools.

Linc-Ed Reporting - Postponed Launch Date - This week we had planned to 'go live' with our new reporting format allowing parents to access log in's and the digital platform we have begun using.

Nigel's leadership is a key component to the successful launch of Linc-Ed (our student management system). Due to these unforeseen circumstances, we will be delaying login in details, and the reports going live until the final week of term. Early July you will receive login information, and reports appear within a couple of days.

There will also be a Parent Information Evening on **Tuesday 2 July at 7pm**, where we will share a presentation with interested parents and be available to answer any questions.

We are excited to share this with you soon. There has been a significant amount of new learning and professional development for staff over the past two terms. We thank you for your patience and understanding during this time.

Staff News - Ms. Haylee Partridge will be joining our Plateau team in Kea class commencing in Term 3. Haylee is currently teaching at Avalon Primary School, and prior to that Fergusson Intermediate. She is looking forward to returning to teaching in Upper Hutt once more. Haylee will bring experience and knowledge to our team, especially in the area of Special Needs Education. Haylee will be attending our Parent Information Evening about Progressions Based Reporting on Tuesday 2 July for Kea parents to have an opportunity to briefly meet her.

We are so pleased to have someone of Haylee's calibre join our team. Being a staff member recently welcomed, I'm sure she too will appreciate the wonderful, friendly and supportive community as she embraces her new position with us at Plateau.

We also wish to welcome Sarah Byrne to our staff. Sarah will be working in classes for part of the day; mostly Kiwi and Paua supporting our learning programmes.

Rebecca Hagen is also assisting with support staff, and joining our team for a short time relieving for some of our teacher aides. Thank you Rebecca.

Farewell for Fiona - As a school community we will be holding a special farewell assembly for Fiona on Friday 5 July beginning at 2:15pm. We will still have our celebration assembly at 9am as a school. This will be a chance for us as a school community to farewell Fiona, if you wish to contribute in any way, please see Pauline or Elizabeth.

BOARD OF TRUSTEES NEWS

Voting has now closed. Results will be announced this Thursday. Good luck to all our candidates.

PB4L CORNER

PB4L at Plateau School....

PB4L is about building a school-wide culture of Positive Behaviour for Learning.

At Plateau School we are aiming: *'To create a safe, secure and positive school environment through a consistent approach to managing learning and behaviour.'*

PB4L is about changing the environment, systems and practices we have in place to support students to make positive behaviour choices.

How do we know PB4L will work for us?

PB4L is based on international evidence and can be tailored to our school's environment and needs.

PB4L is based on the Positive Behavioural Interventions and Supports (PBIS) framework developed at the University of Oregon in the 1990s. PBIS is now in thousands of schools across the United States and there are over 800 schools involved in New Zealand. We receive training, support and funding from the Ministry of Education to implement PB4L at our school.

PB4L can be adapted to match our school's needs. It will complement our current approaches to managing behaviour and learning, such as restorative practice. It will not replace these. Rather it will help us use these practices consistently and effectively across the entire school.

This week our Values focus is **Caring - Manaaki**.

Our key teaching points for this value include:

- We are kind
- We look after people and the environment
- We are good friends to others



SCHOLASTIC BOOK CLUB NEWS

Scholastic Book Club - Issue 4 is out now and will close on Tuesday 18th June.

OTHER NEWS

Huttfest Tickets - Tickets are available from the school office for the upcoming Huttfest Festival. They are \$5 each. If you wish to pay via internet banking, please use your name and Huttfest as a reference, and we will send them home with your child. Last day for ordering tickets is Tuesday 25th June.

Change of Personal Details - If any of your personal details have changed within the last six months (ie address, phone, work or emergency contact details), can you please double-check with Suzanne Modd that we have your correct details on file. Thanks.

HOUSE-KEEPING

Absences - If your child is going to be absent from school, please ensure you notify the school by 8.45am. We have a dedicated answer phone message for leaving an absence. Please remember to state your child's name, room and the reason for the absence. If you do not give a reason, we have to record your child down as an unjustified absence. Medical certificates are required for 5 or more days away from school due to sickness.

After School Care - Please remember to book your child into After School Care on the days that they will be attending (unless they are regulars). We need to know who is supposed to be attending for the safety of our students. Also, if your child is regularly in on a particular day and they won't be there for some reason, please let us know. We appreciate your support. Thanks.

Before School Care operates between 7.30am and 8.30am and After School Care starts at 3pm and closes at 6pm. All children must be collected by 6pm at the latest.

Time sheets showing the balance owing will be emailed to you at the beginning of each month, for the month previous.

Toys at School - We understand that children want to bring their special toys to school to show their friends. However, we discourage this as, more often than not, the toys end up broken or missing, which is very upsetting for the children plus they can also cause a distraction in class. Please support us in this by ensuring your children do not bring their toys to school, as we take no responsibility for broken, lost or missing toys. Thanks.

Parking - Just a reminder that parking is not permitted in the school grounds between the hours of 8am - 4pm. Thanks.

The Police are doing random visits to monitor driving and parking habits outside our school. Please ensure you drive slowly down Molloy's Road, watch out for children crossing, and do not stop on the yellow lines (even to drop off your child).

DATES FOR YOUR DIARY

June

- | | |
|----------------|--|
| Friday 14th | - New Board of Trustees take office |
| Tuesday 18th | - Issue 4 of the Scholastic Book Club closes |
| Wednesday 19th | - First Meeting for the New Board of Trustees |
| Saturday 22nd | - Rock'n Bingo (Home & School Fundraising Night) |
| Tuesday 25th | - Last day for ordering Huttfest tickets |
| Thursday 27th | - Gymfest |

July

- | | |
|---------------|--|
| Tuesday 2nd | - Linc-Ed Reporting Parent Information Evening |
| | - Huttfest Rehearsal (11.30am - 1pm) |
| | - Regional Cross Country |
| Wednesday 3rd | - Huttfest (6pm) |
| Thursday 4th | - Regional Cross Country (postponement day) |
| Friday 5th | - Last Day for Term 2 |

TERM DATES FOR 2019

- | | |
|--------|--|
| Term 2 | - Mon 29 th April - Fri 5 th July (98 half-days) |
| Term 3 | - Mon 22 nd July - Fri 27 th September (100 half-days) |
| Term 4 | - Mon 14 th October - Thur 19 th December (94 half-days) |

THERE WILL BE A TEACHER ONLY DAY ON FRIDAY 25TH OCTOBER 2019 (SCHOOL CLOSED)

SCHOOL LUNCHES

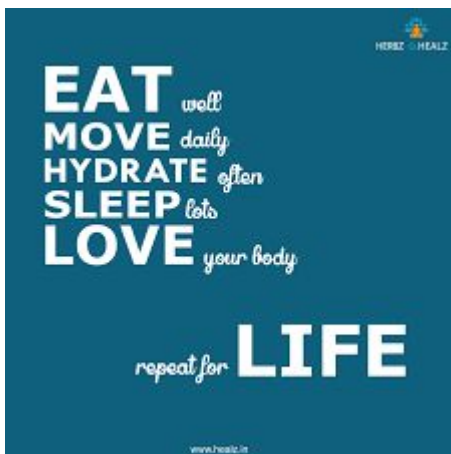


School Lunches – School lunches this week:

Thursday – Subway (\$5.00 mini sub pack, \$6.00 6" sub pack). To order please go to www.subway.co.nz. Select "Online Ordering" then "Subway School Lunch Programme". Close off for orders is 8.45am that morning. If you have any issues with the ordering process, please contact 0800 782 273.

Friday – American Hot Dog (\$3.00)
Gluten free option will be sausage in bread.

STAY SAFE, HEALTHY & HELP OUR PLANET..



HOME & SCHOOL NEWS



PLATEAU HOME & SCHOOL PRESENTS

ROCK'N BINGO

THE EVENT OF THE YEAR NOT TO BE MISSED
PRIZES, GAMES, RAFFLES AND AUCTION ITEMS
ONLY \$25 (INCLUDES BINGO CARDS)

SATURDAY 22ND JUNE AT 6:30-10:30PM

PLATEAU SCHOOL HALL

CASH BAR

TICKETS AVAILABLE @ PLATEAU SCHOOL OFFICE
(LIMITED NUMBERS)



COMMUNITY NEWS

Artrageous Kids Programme: 8 – 19 July 2019 [BOOK ARTRAGEOUS APRIL](#)

**Venue: Poneke Dojo, Prince of Wales Park, Salisbury Tce, Mt Cook, Wellington
8.30am–3:00pm \$69 and after care 3:00pm-5.15pm \$15**

Aimed at children aged 5-12 years. Our classes provide a space for all children to explore at their own pace; chaotic or careful, gingerly or with gusto, tiptoeing or tromping. Our aim is to draw out their creativity, not stuff things in! Bookings essential.

» [View the programme.](#) [BOOK NOW!](#)

~~~~~

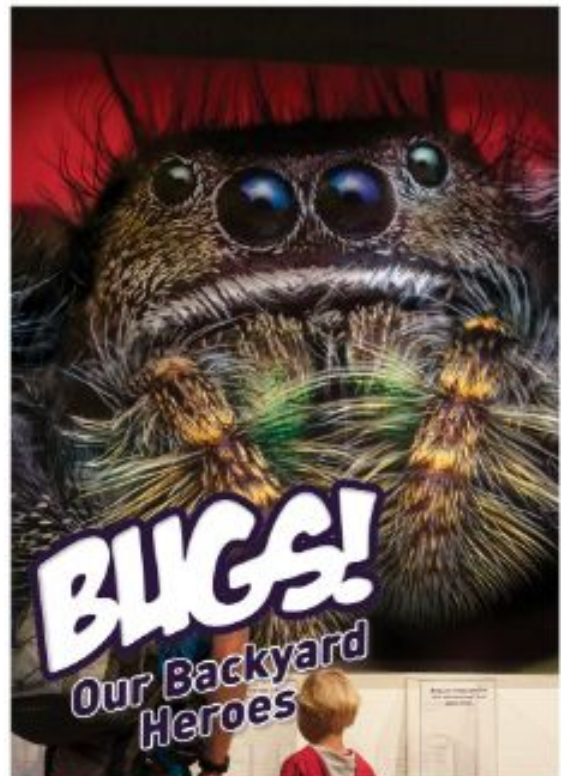


**CHAMBER MUSIC NEW ZEALAND CELEBRATES MATARIKI 2019 WITH**

## **TORU**

**SUNDAY 30 JUNE - 1PM - FREE**

NZTrio & Taonga Puoro NZTrio presents Toru, a celebration of Matariki. This beautifully curated performance of works written especially for NZTrio by kiwi composers, explores the meaning of Matariki in modern day Aotearoa. Maori mythology is brought to musical life in works by Gareth Farr, Richard Nunns and Victoria Kelly. These tales are interwoven with three new works celebrating Matariki.



## **BUGS: OUR BACKYARD HEROES**

**29 JUNE - 11 SEPTEMBER - ENTRY BY DONATION**

Bugs may have a reputation for being small, scaly and scary but some creepy crawlies are actually superheroes in disguise!

Bugs! Our Backyard Heroes is a family-friendly, hands-on educational experience that brings visitors face-to-face with some real live mini-monsters. The exhibition explores the secret world of bugs and the vital role they play in our lives without us even realising it! Featuring 'Eugene', the giant centipede, and his friends the tree wētā, stick insects, locusts, crickets, cockroaches and Avondale spiders, the exhibition also provides the opportunity for visitors to learn about the different native species of bugs in New Zealand and the sometimes precarious position they hold in the ecosystem.

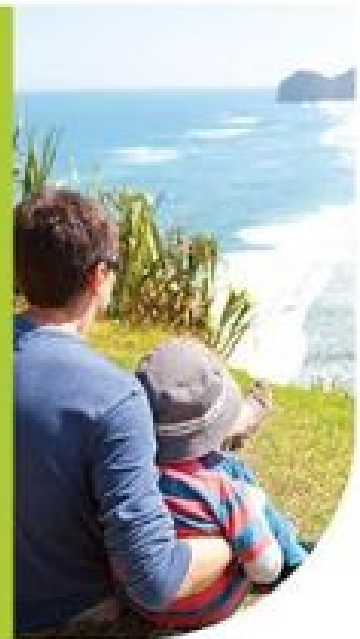
Developed and toured by Pukeariki  
Privately supported by Kiwi Zebra Tours Ltd, Blenheim, New Zealand





# How to be Safe in New Zealand

Free Information Session



Migrant

Connect

- TOPICS:**
- Role of Police in Community
  - Personal Safety
  - Road Safety
  - Family Harm
  - Alcohol and drugs

**WHEN:** Monday 24<sup>th</sup> June 2019; 10:30 – 12:00

**WHERE:** Upper Hutt Library learning centre,  
844 Fergusson Drive, Upper Hutt

**CONTACT:** All welcome, please register:  
04 528 9040 or [upperhutt@cab.org.nz](mailto:upperhutt@cab.org.nz)

Citizens Advice Bureau Upper Hutt  
offer free, face to face support to new migrants.

Light refreshments provided.

0800 FOR CAB (0800 367 222)  
[www.cab.org.nz](http://www.cab.org.nz)

Citizens  
Advice  
Bureau



Funded by Immigration New Zealand